

Figure 1. Environmental Zones



Figure 2. CS2000 squares surveyed for module 5 by Environmental Zone

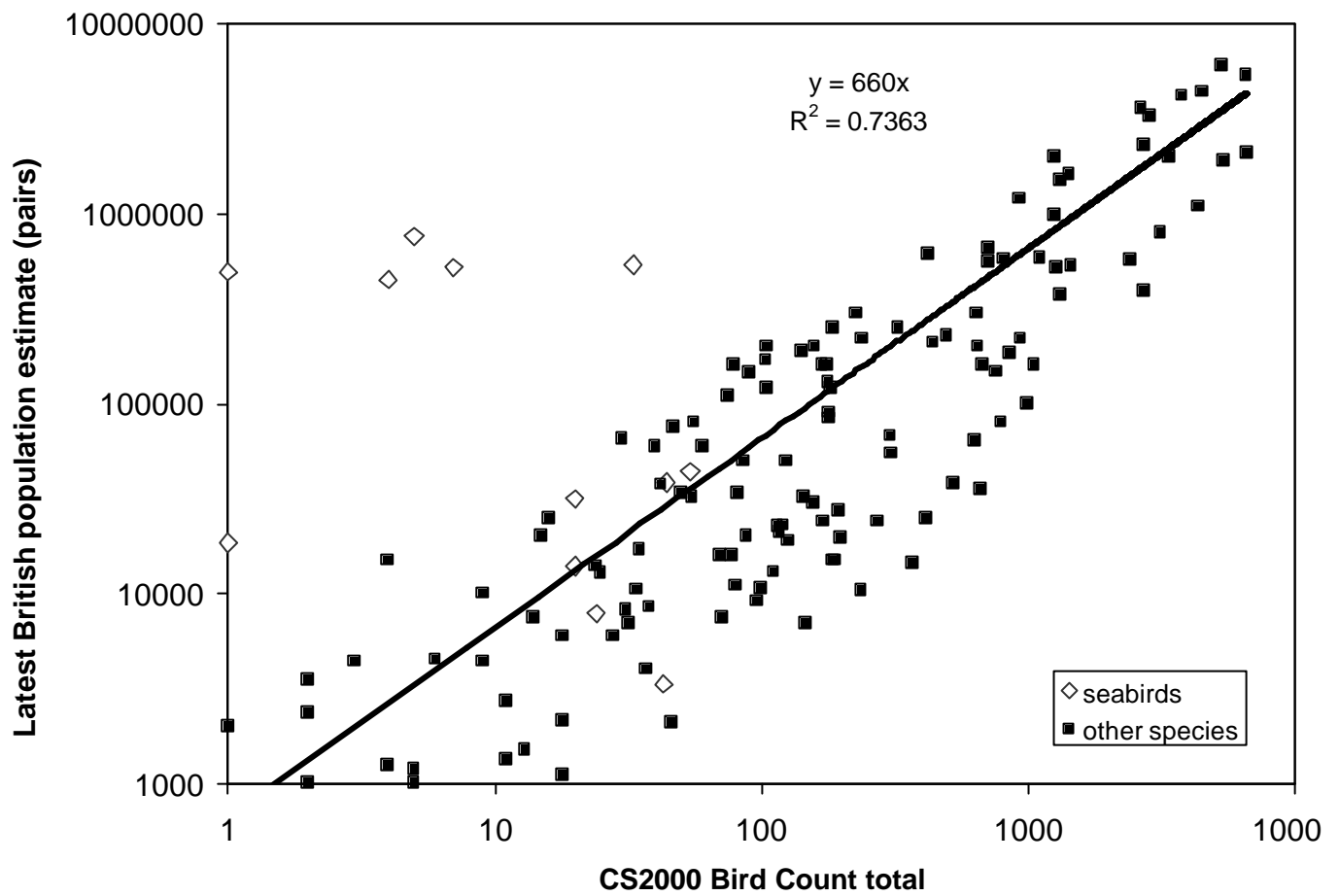


Figure 3. Comparison of the total numbers of each species recorded on CS2000 bird counts and the latest British breeding population estimates

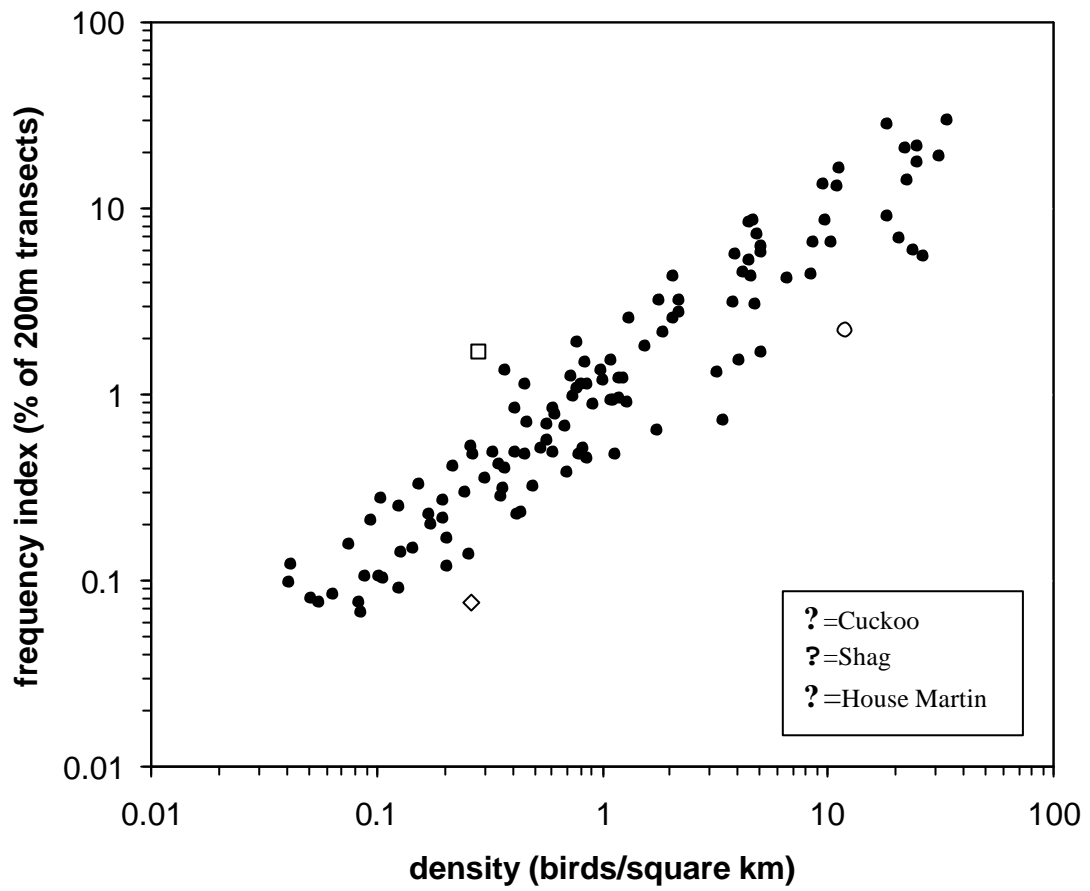


Figure 4. Relationship between species density estimates and frequency index

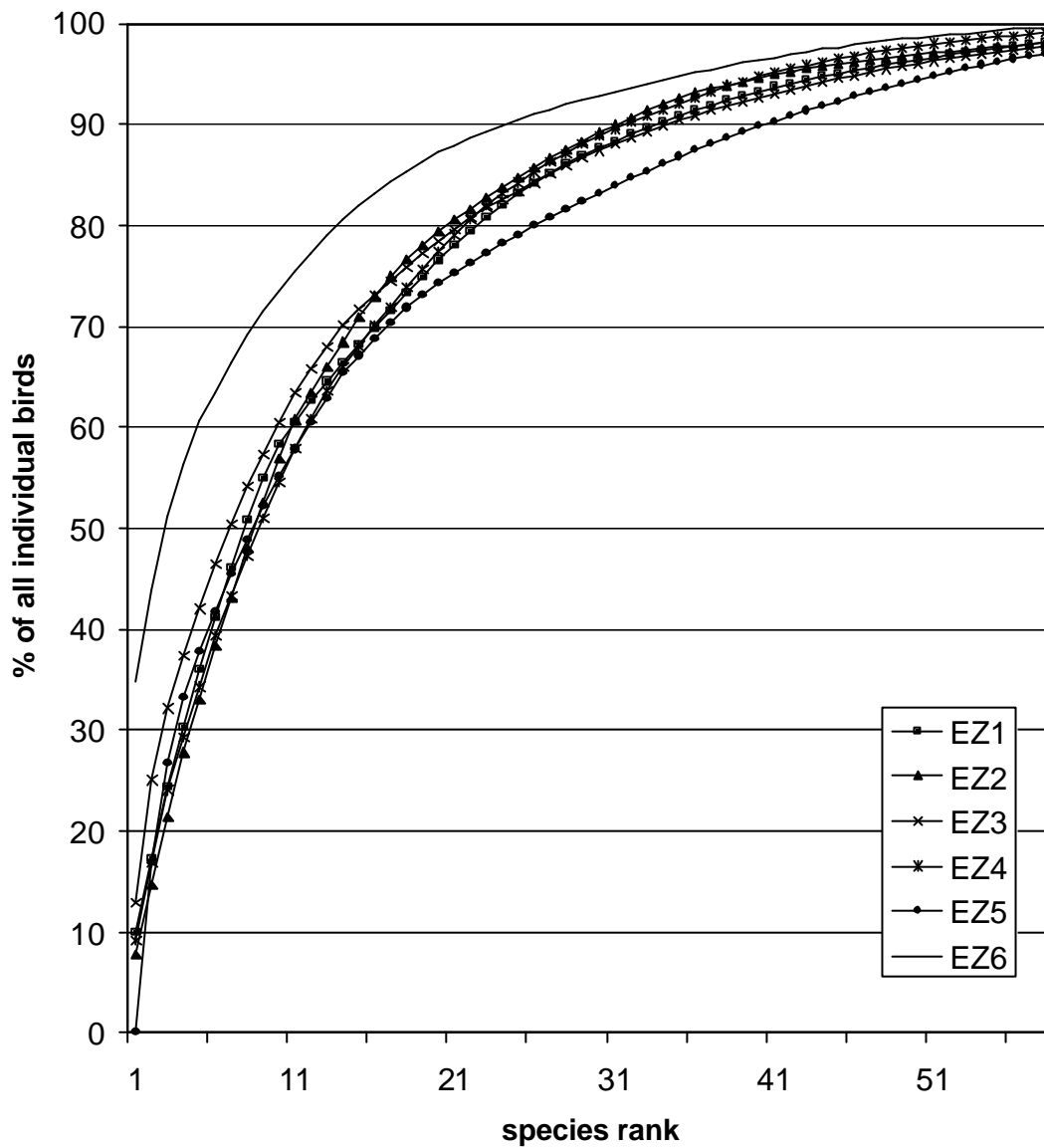


Figure 5. Cumulative Species Abundance Curves for the six Environmental Zones

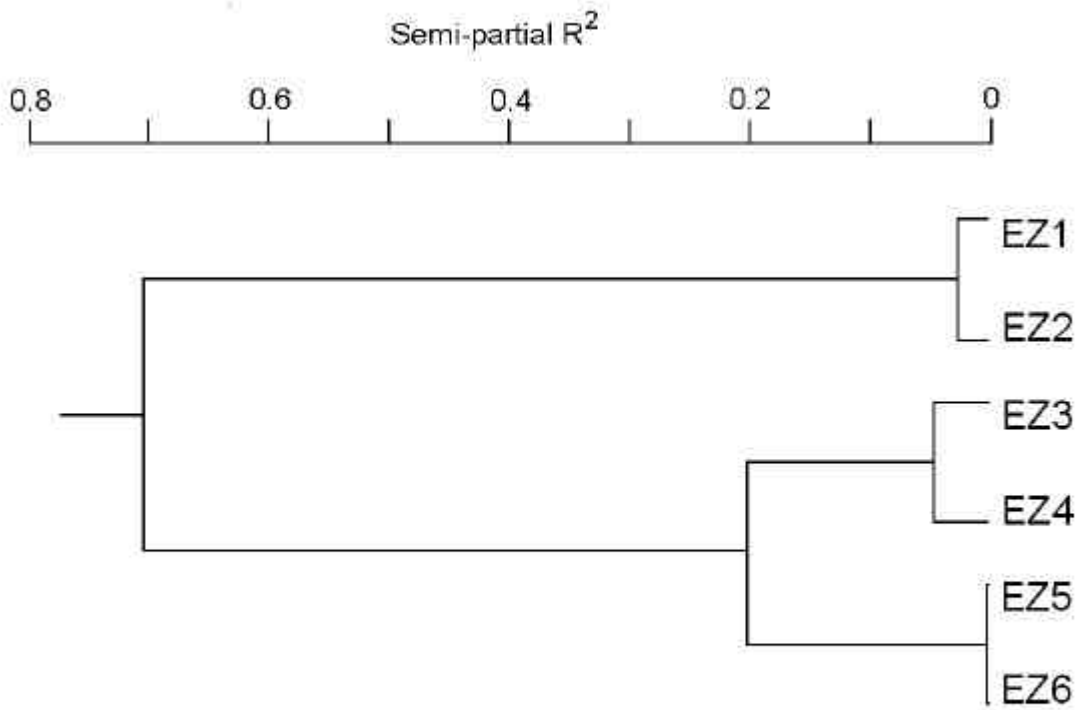


Figure 6. Dendrogram showing the results of Ward's Cluster Analysis of the 6 Environmental Zones based on bird species density estimates.

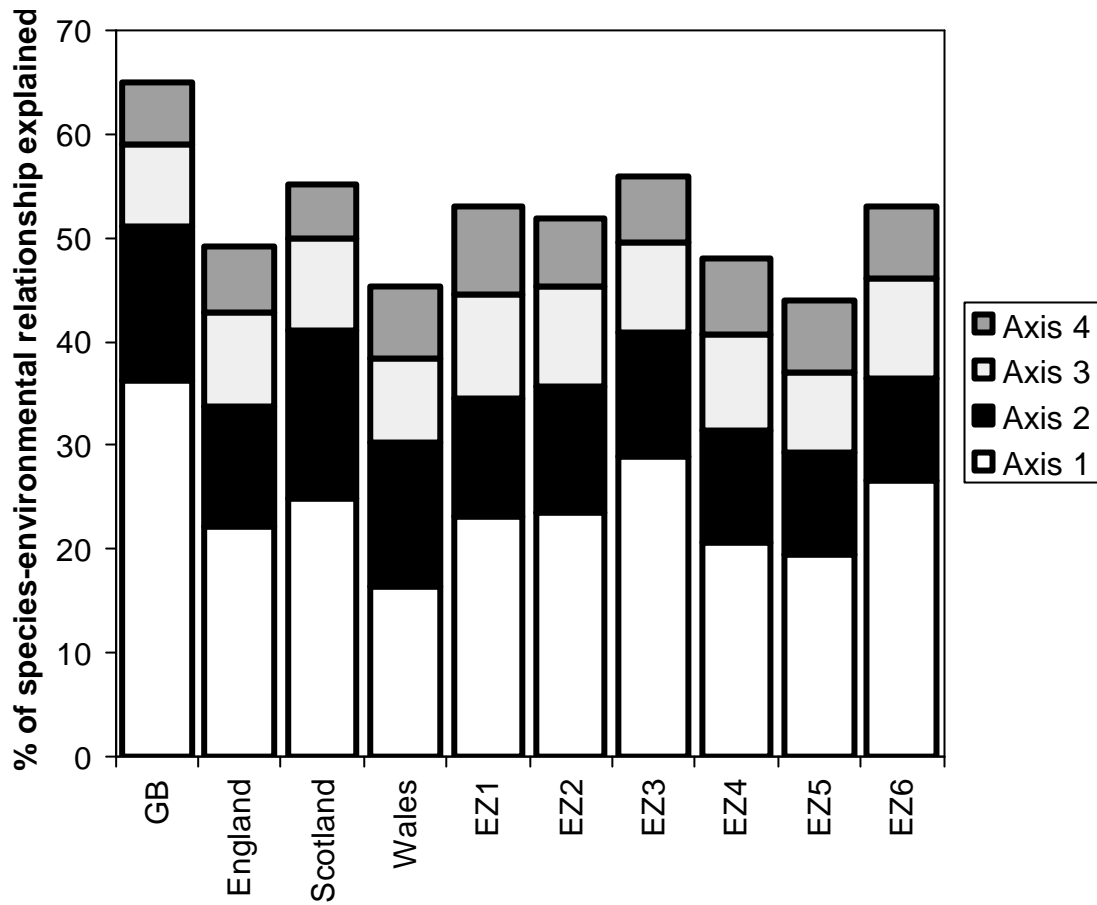


Figure 7 Percentage of Variance of species-environmental variable relationships explained by the first four CCA Axis for country and Environmental zone breakdowns

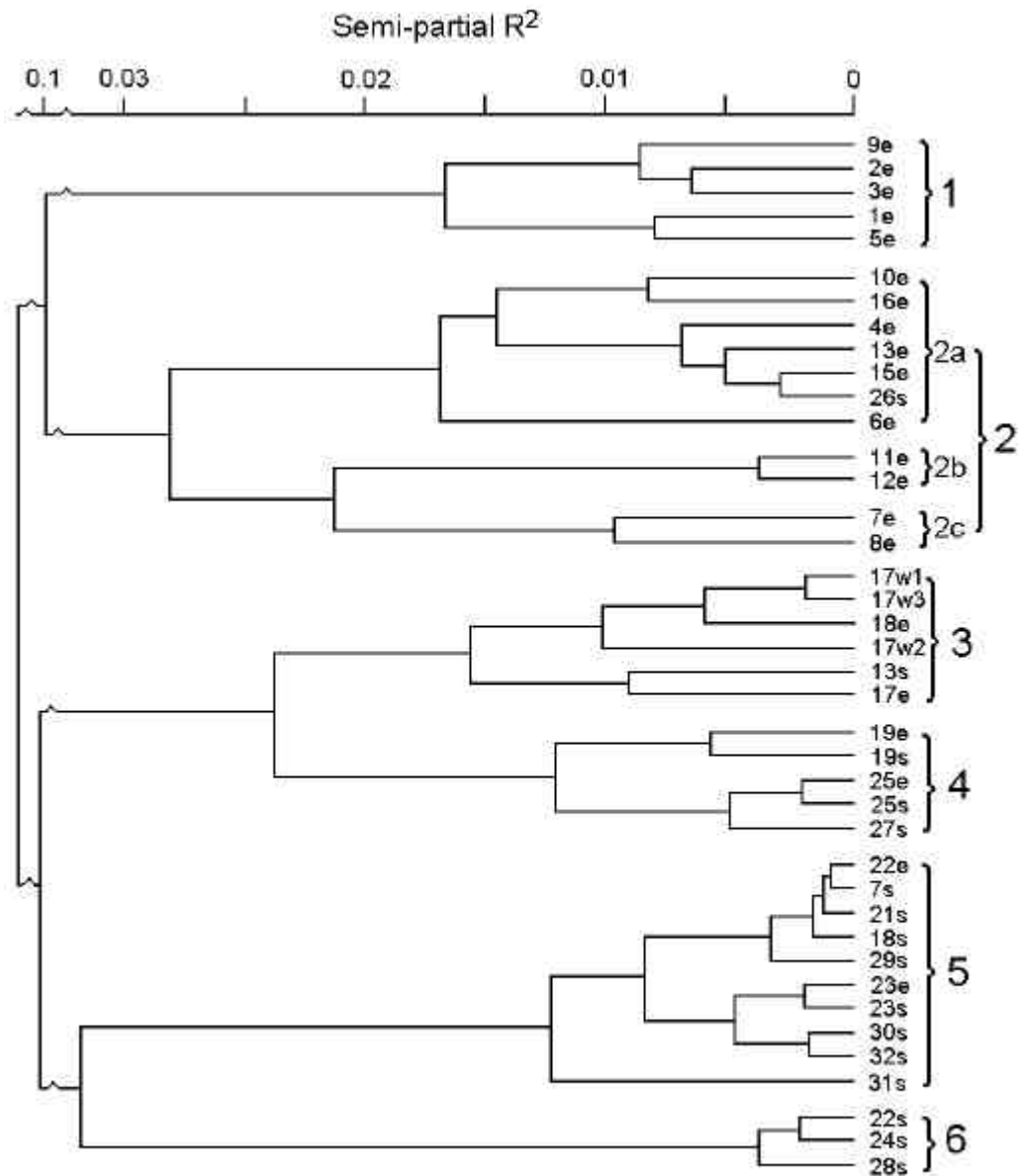


Figure 8. Dendrogram showing the results of Ward's Cluster Analysis of the 40 Land Classes into 6 Avifaunal Zones.

Note that the scale is broken at the left hand side of the dendrogram. Avifaunal Zones 1 and 2 separate at a semi-partial R^2 of 0.05, Avifaunal Zones 3,4,5 & 6 separate at a semi-partial R^2 of 0.098 and these separate from 1 and 2 at a semi-partial R^2 of 0.526.

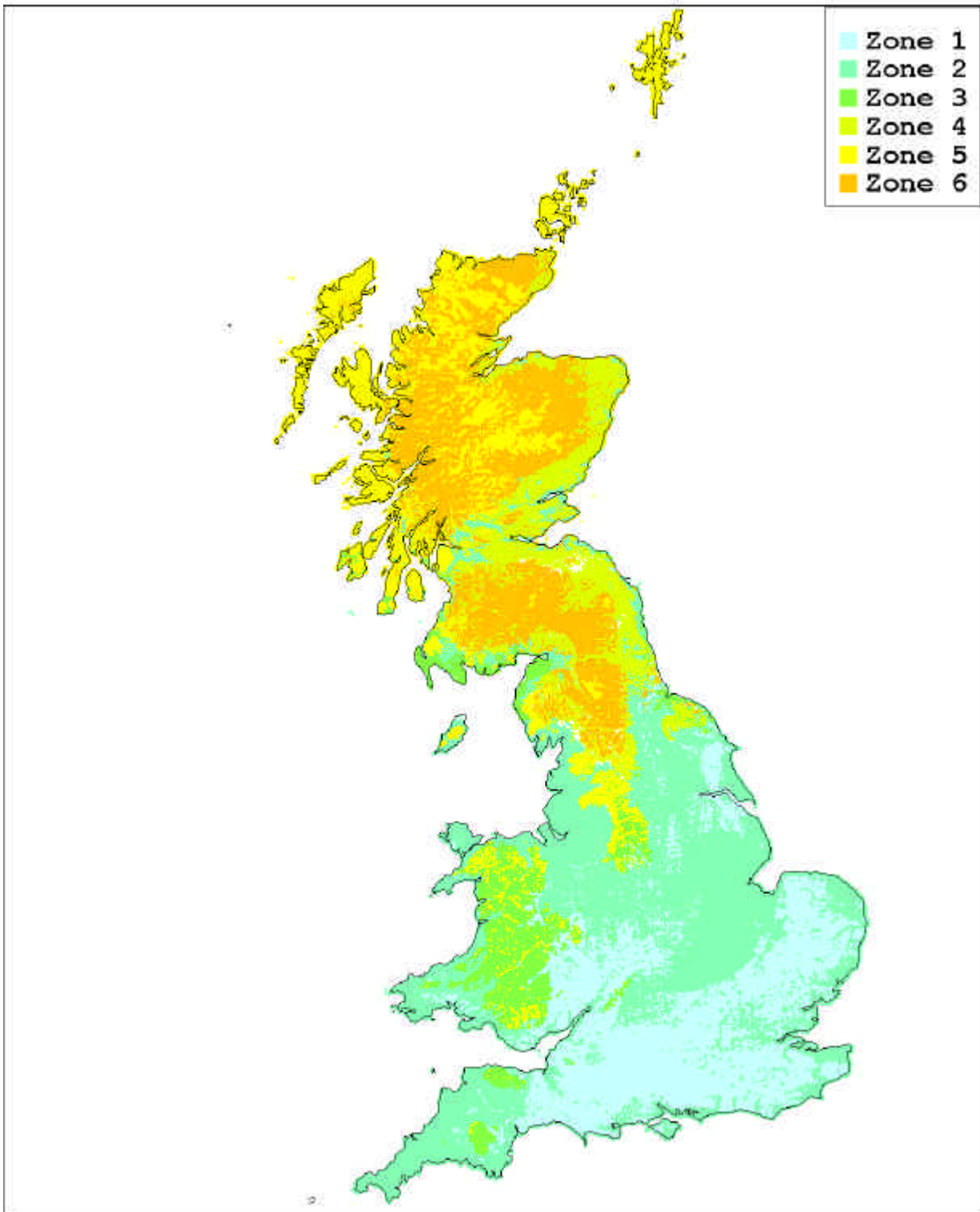


Figure 9. Avifaunal Zones derived from Land Classes and Module 5 bird data

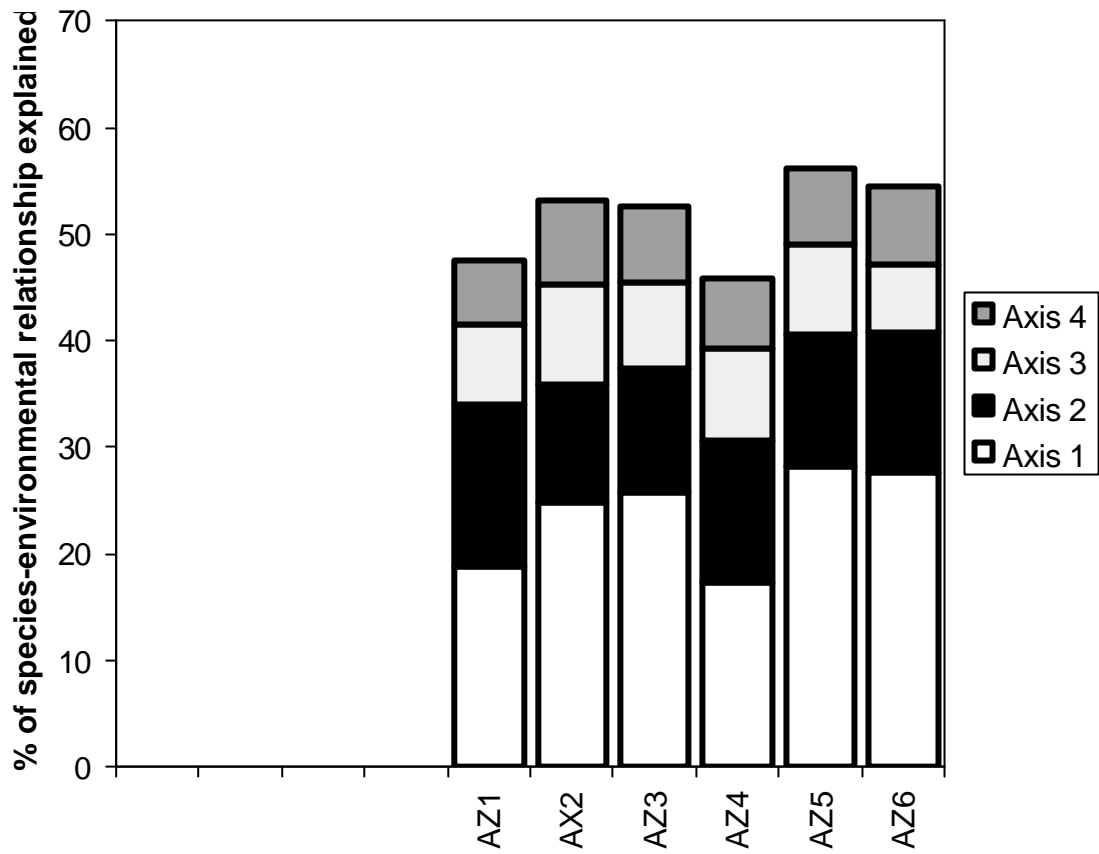


Figure 10 Percentage of Variance of species-environmental variable relationships explained by the first four CCA Axis for Avifaunal Zones

APPENDIX 1 Survey Instructions (see following yellow pages).

Please note that the example of the completed Transect and Habitat Recording Sheet on Page 7 of the Instructions is a hypothetical example only.

[Note: For this online version of the report, pages 52 to 90 are to be found in the separate PDF files for appendices 1, 2 and 3. Some pages cannot be reproduced with page numbers.]